

Seshadripuram Educational Trust
SESHADRIPURAM ACADEMY OF BUSINESS STUDIES
(Affiliated to Bangalore University)
NAAC Accredited 'B' Grade
Kengeri Satellite Town, Bengaluru- 560060.

STUDENT SATISFACTION SURVEY

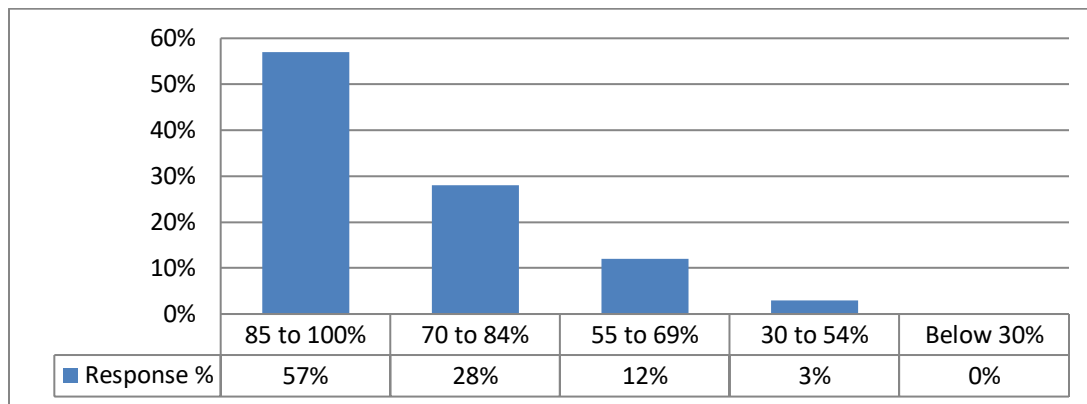
(2020-21)

1. How much of the syllabus was covered in the class?

Particular	No. of Responses	Response %
85 to 100%	110	57%
70 to 84%	55	28%
55 to 69%	25	12%
30 to 54%	05	03%
Below 30%	0	00%

Analysis:

The table shows the response collected by students on the syllabus completion process.



Interpretation:

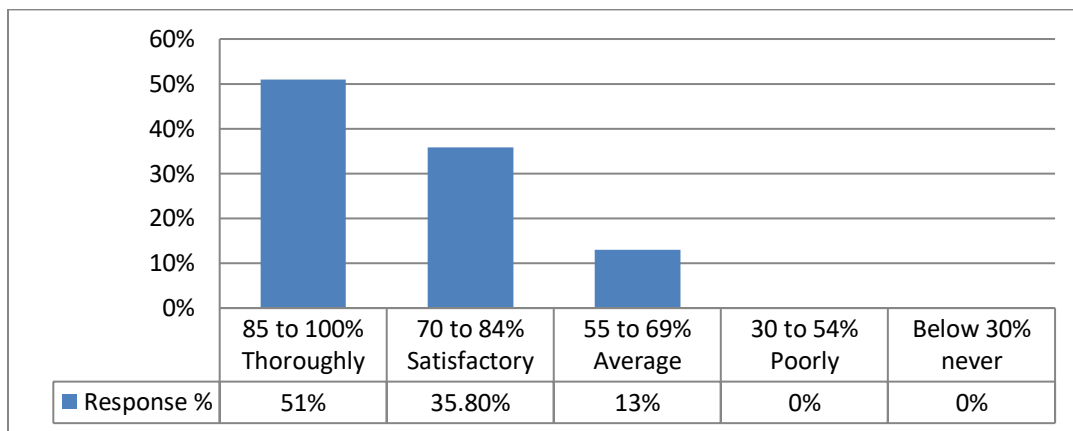
From the above table, the response of the students for syllabus covered in class are mentioned, where 57% students agree with 85-100 percent completion, 28% students agree with 70-84 percent completion and the rest 15% agree to 69 percent and less.

2. How well did the teachers prepare for the classes?

Particular	No. of Responses	Response %
85 to 100%	100	51%
70 to 84%	70	35.8%
55 to 69%	25	13%
30 to 54%	00	00%
Below 30%	00	00%

Analysis:

The table shows the response of students on the subject preparation level of a teacher.



Interpretation:

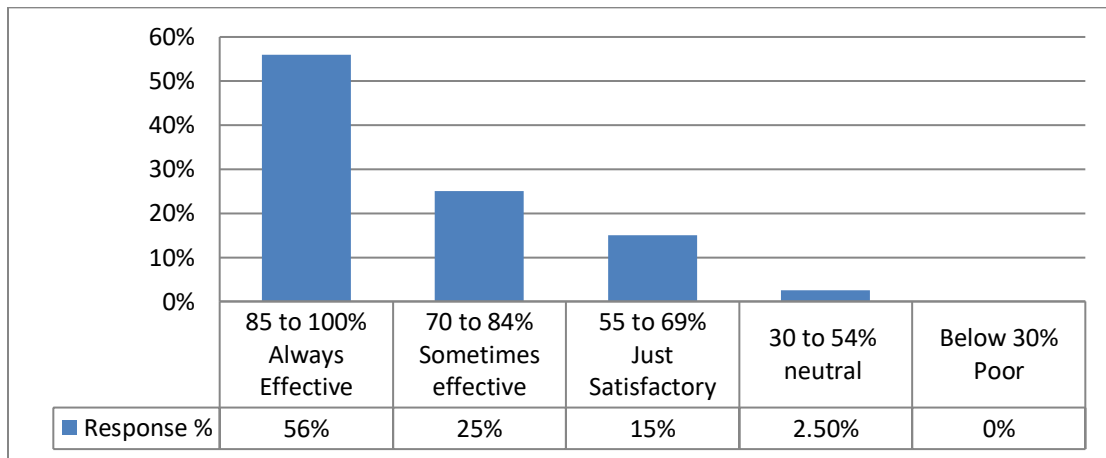
From the above table and graph, the response of students for the subject preparation level of a teacher are mentioned, where 51% students agree with 85-100 percent completion, 36% students agree with 70-84 percent completion and the rest 13% agree to 69 percent and less.

3. How well were the teachers able to communicate?

Particular	No. of Responses	Response %
85 to 100%	110	56%
70 to 84%	50	25%
55 to 69%	30	15%
30 to 54%	05	2.5%
Below 30%	00	00%

Analysis:

The table shows the response of students on how well were the teachers able to communicate.



Interpretation:

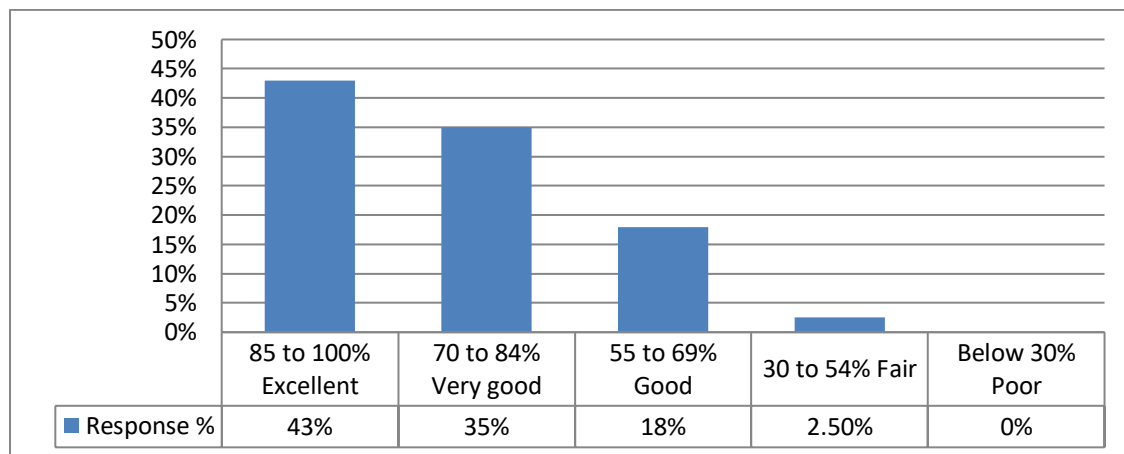
From the above table and graph, the response of students for the teachers ability to communicate are mentioned, where 56% students agree with 85-100 percent completion, 25% students agree with 70-84 percent completion and the rest 18% agree to 69 percent and less.

4. The teacher's approach to teaching can best be described as:

Particular	No. of Responses	Response %
85 to 100%	85	43%
70 to 84%	70	35%
55 to 69%	35	18%
30 to 54%	05	2.5%
Below 30%	00	0%

Analysis:

The table shows the response of students on teacher's approach to teaching.



Interpretation:

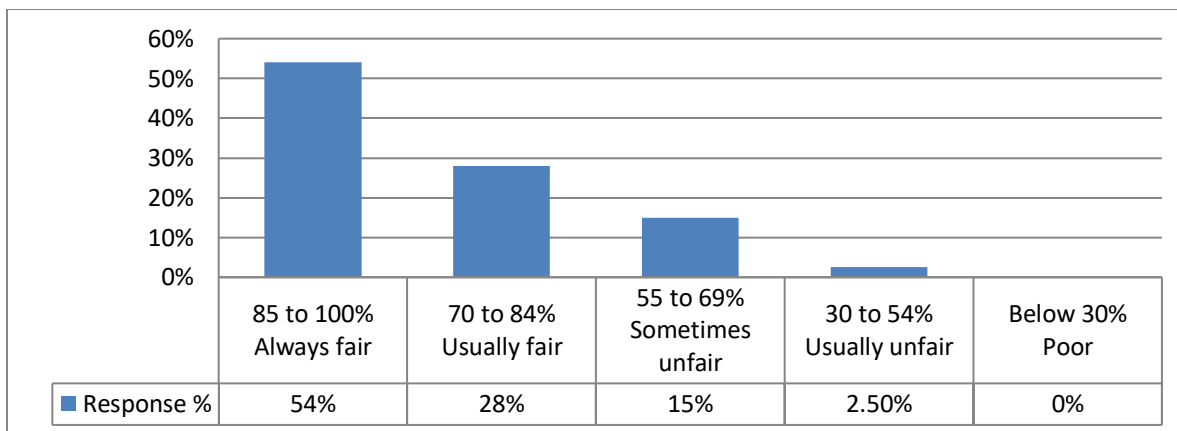
From the above table and graph, the response of students for teacher's approach to teaching are mentioned, where 43% students agree with 85-100 percent completion, 35% students agree with 70-84 percent completion and the rest 21% agree to 69 percent and less.

5. Fairness of the internal evaluation process by the teachers.

Particular	No. of Responses	Response %
85 to 100%	105	54%
70 to 84%	55	28%
55 to 69%	30	15%
30 to 54%	05	2.5%
Below 30%	00	0%

Analysis:

The table shows the response of students on Fairness of the internal evaluation process by the teachers.



Interpretation:

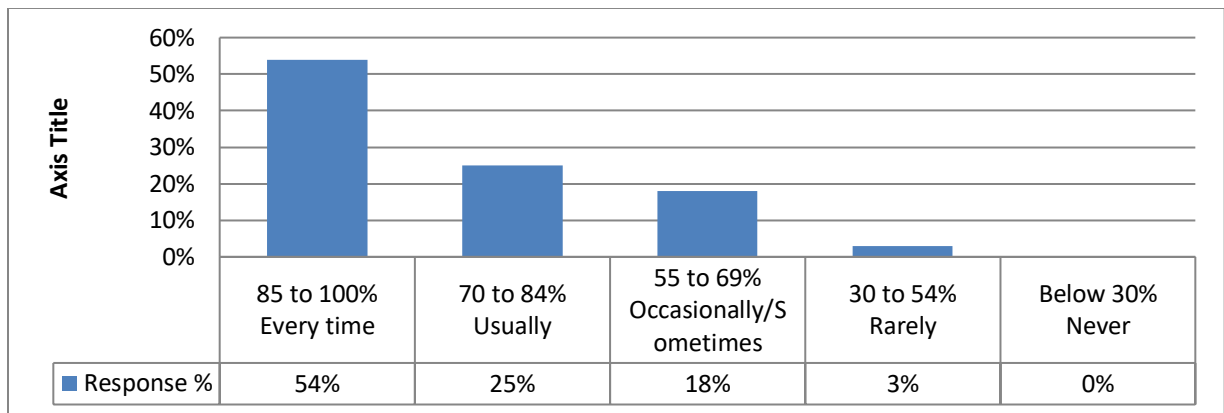
From the above table and graph, the response of student's for Fairness of the internal evaluation process by the teachers are mentioned, where 54% students agree with 85-100 percent completion, 28% students agree with 70-84 percent completion and the rest 18% agree to 69 percent and less.

6. Was your performance in assignments discussed with you?

Particular	No. of Responses	Response %
85 to 100%	105	54%
70 to 84%	50	25%
55 to 69%	35	18%
30 to 54%	05	3%
Below 30%	00	00%

Analysis:

The table shows the response of students on scrutiny of their performance in assignments.



Interpretation:

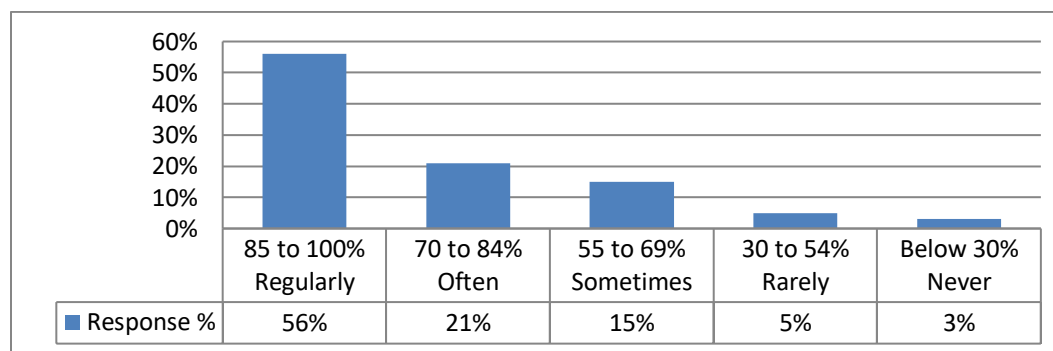
From the above table and graph, the response of student's for scrutiny of their performance in assignments are mentioned, where 54% students agree with 85-100 percent completion, 25% students agree with 70-84 percent completion and the rest 21% agree to 69 percent and less.

7. The institute takes active interest in promoting internship, student exchange, field visit opportunities for students.

Particular	No. of Responses	Response %
85 to 100%	110	56%
70 to 84%	40	21%
55 to 69%	30	15%
30 to 54%	10	5%
Below 30%	05	3%

Analysis:

The table shows the response of students on the institution's interest in promoting internship, student exchange, and field visit opportunities for students.



Interpretation:

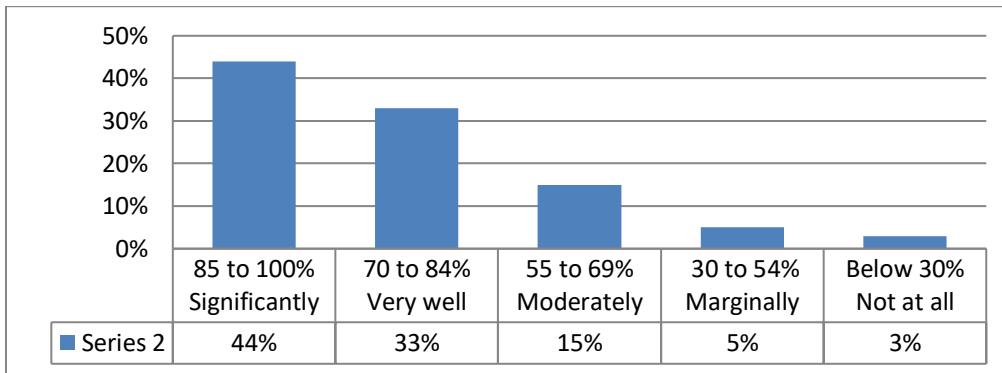
From the above table and graph, the response of students on the institution's interest in promoting internship, student exchange, and field visit opportunities for students are mentioned, where 56% students agree with 85-100 percent completion, 21% students agree with 70-84 percent completion and the rest 23% agree to 69 percent and less.

8. The teaching and mentoring process in your institution facilitates you in cognitive, social and emotional growth.

Particular	No. of Responses	Response %
85 to 100%	85	44%
70 to 84%	65	33%
55 to 69%	30	15%
30 to 54%	10	5%
Below 30%	05	3%

Analysis:

The table shows the response of students on the teaching and mentoring process by the institution in cognitive, social and emotional growth.



Interpretation:

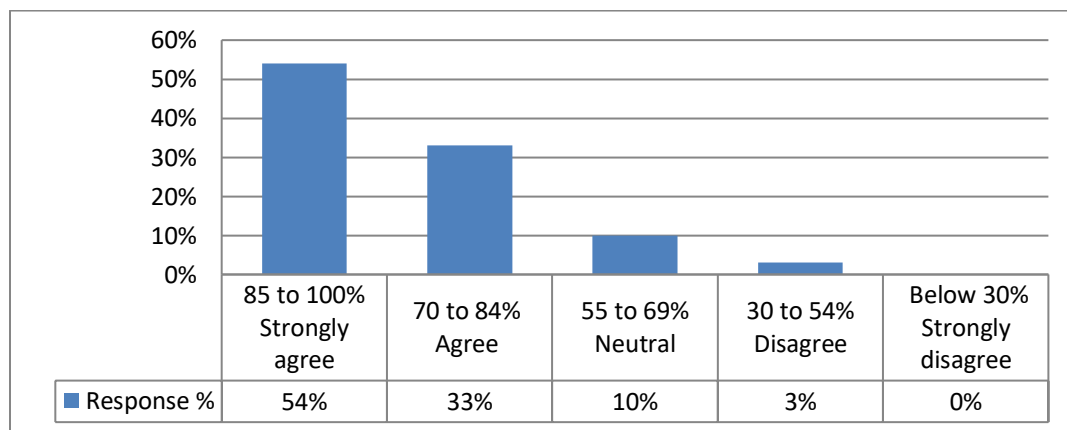
From the above table and graph, the response of students on teaching and mentoring process by the institution in cognitive, social and emotional growth are mentioned, where 44% students agree with 85-100 percent completion, 33% students agree with 70-84 percent completion and the rest 23% agree to 69 percent and less.

9. The institution provides multiple opportunities to learn and grow.

Particular	No. of Responses	Response %
85 to 100%	105	54%
70 to 84%	65	33%
55 to 69%	20	10%
30 to 54%	05	3%
Below 30%	00	0%

Analysis:

The table shows the response of students on providing multiple opportunities to learn and grow by the institution.



Interpretation:

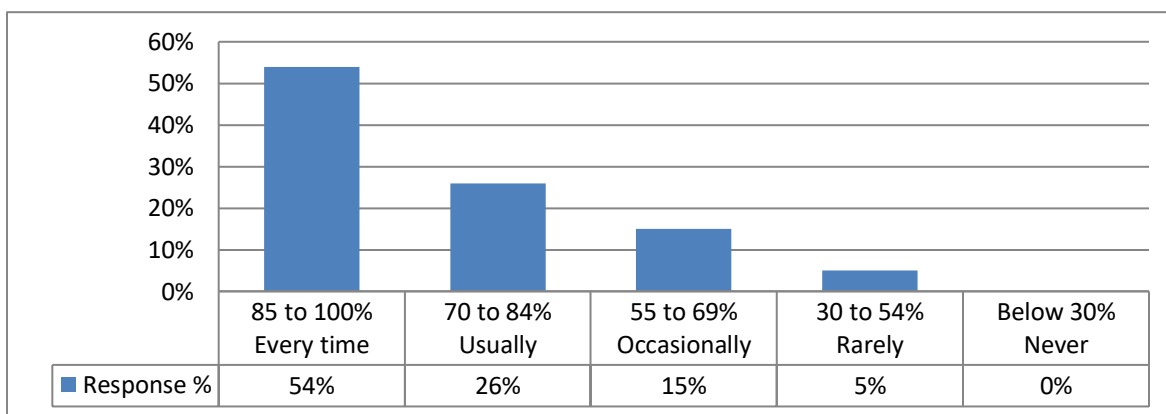
From the above table and graph, the response of students on providing multiple opportunities to learn and grow by the institution are mentioned, where 54% students agree with 85-100 percent completion, 33% students agree with 70-84 percent completion and the rest 13% agree to 69 percent and less.

10. Teachers inform you about your expected competencies, course outcomes and programme outcomes.

Particular	No. of Responses	Response %
85 to 100%	105	54%
70 to 84%	50	26%
55 to 69%	30	15%
30 to 54%	10	5%
Below 30%	00	0%

Analysis:

The table shows the response of students on Teacher informing about students expected competencies, course outcomes and programme outcomes.



Interpretation:

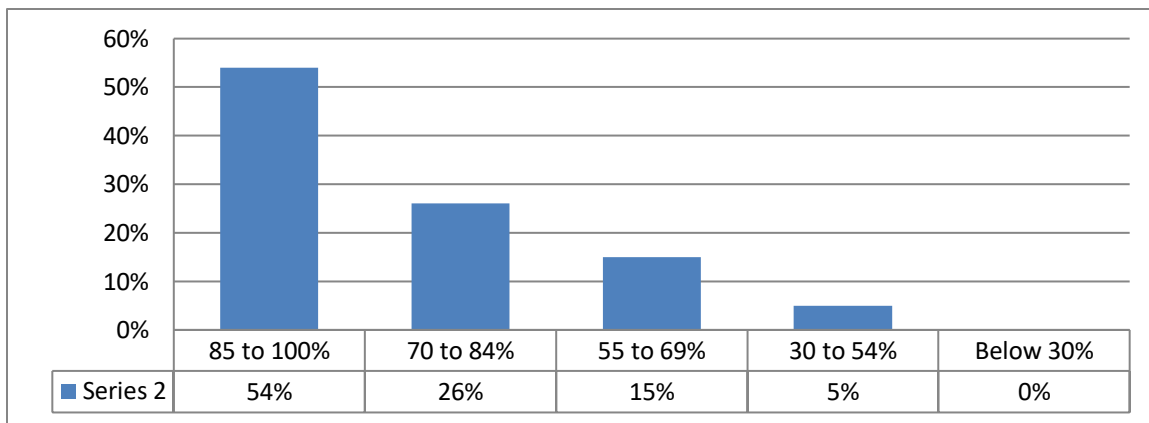
From the above table and graph, the response of students on Teacher informing about students expected competencies, course outcomes and programme outcomes are mentioned, where 54% students agree with 85-100 percent completion, 26% students agree with 70-84 percent completion and the rest 20% agree to 69 percent and less.

11. Your mentor does a necessary follow-up with an assigned task to you.

Particular	No. of Responses	Response %
85 to 100%	105	54%
70 to 84%	50	26%
55 to 69%	30	15%
30 to 54%	10	5%
Below 30%	00	0%

Analysis:

The table shows the response of students on mentor following up students on assigned task.



Interpretation:

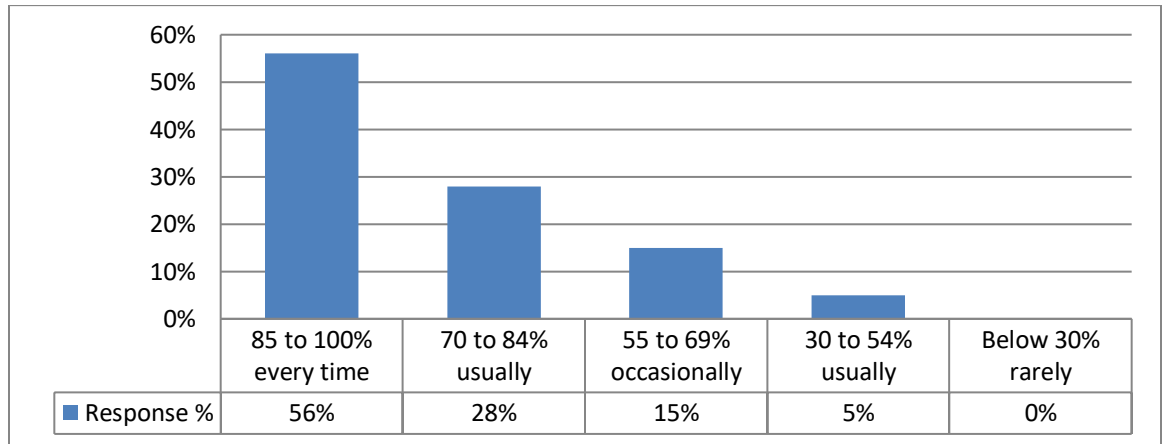
From the above table and graph, the response of students on mentor following up students on assigned task are mentioned, where 54% students agree with 85-100 percent completion, 26% students agree with 70-84 percent completion and the rest 20% agree to 69 percent and less.

12. The teachers illustrate the concepts through examples and applications.

Particular	No. of Responses	Response %
85 to 100%	110	56%
70 to 84%	55	28%
55 to 69%	30	15%
30 to 54%	10	5%
Below 30%	00	0%

Analysis:

The table shows the response of students on teachers illustrate the concepts through examples and applications.



Interpretation:

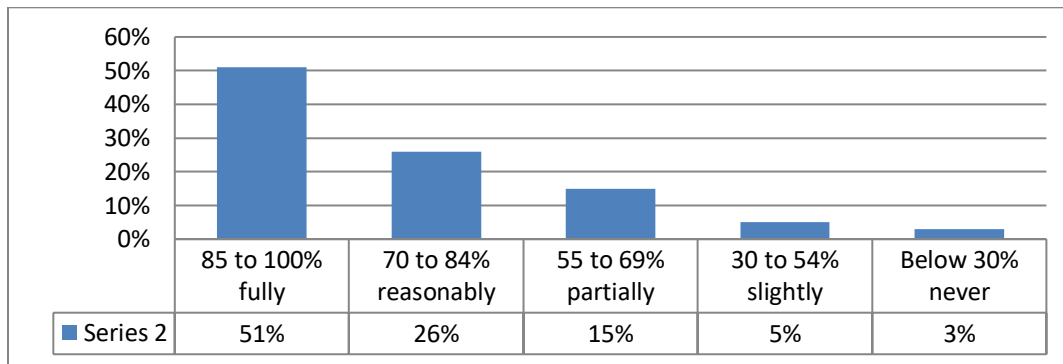
From the above table and graph, the response of students on teachers illustrates the concepts through examples and applications are mentioned, where 56% students agree with 85-100 percent completion, 28% students agree with 70-84 percent completion and the rest 20% agree to 69 percent and less.

13. The teachers identify your strengths and encourage you with providing right level of challenges.

Particular	No. of Responses	Response %
85 to 100%	100	51%
70 to 84%	50	26%
55 to 69%	30	15%
30 to 54%	10	5%
Below 30%	05	3%

Analysis:

The table shows the response of students on teachers identifying students strengths and encouraging them with providing right level of challenges.



Interpretation:

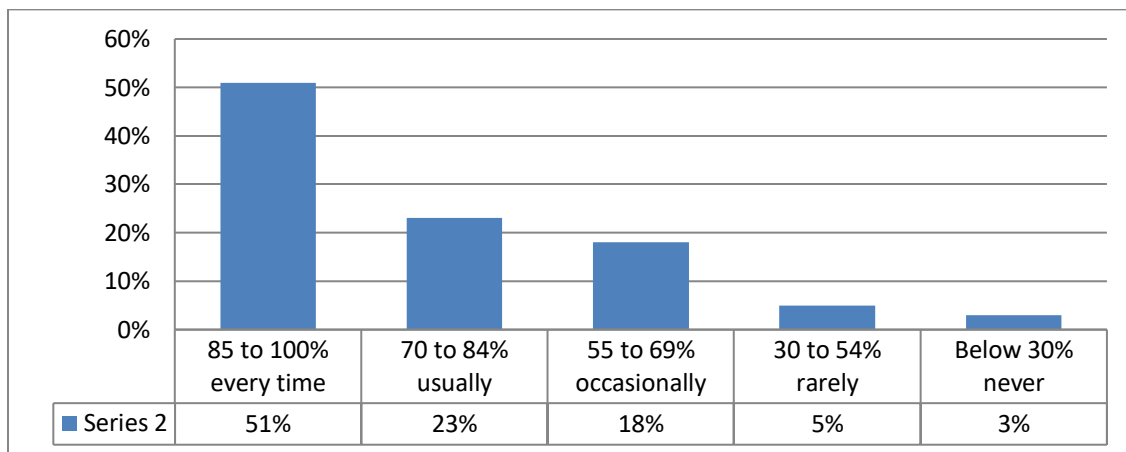
From the above table and graph, the response of studentson teachers identifying students strengths and encouraging them with providing right level of challenges are mentioned, where 51% students agree with 85-100 percent completion, 26% students agree with 70-84 percent completion and the rest 23% agree to 69 percent and less.

14. Teachers are able to identify your weaknesses and help you to overcome them.

Particular	No. of Responses	Response %
85 to 100%	100	51%
70 to 84%	45	23%
55 to 69%	35	18%
30 to 54%	10	5%
Below 30%	05	3%

Analysis:

The table shows the response of students on teacher's ability to identify student's weaknesses and help them to overcome it.



Interpretation:

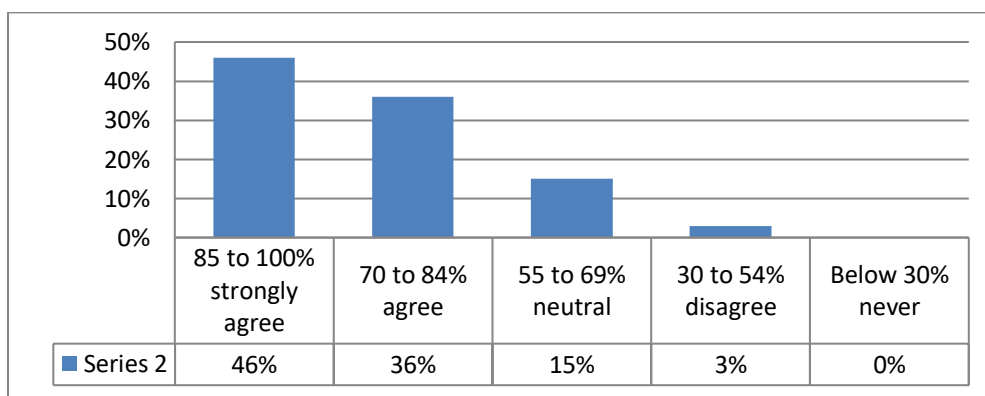
From the above table and graph, the response of studentson teacher's ability to identify student's weaknesses and help them to overcome it are mentioned, where 51% students agree with 85-100 percent completion, 23% students agree with 70-84 percent completion and the rest 26% agree to 69 percent and less.

15. The institution makes effort to engage students in monitoring, review and continuous quality improvement of the teaching learning process.

Particular	No. of Responses	Response %
85 to 100%	90	46%
70 to 84%	70	36%
55 to 69%	30	15%
30 to 54%	05	3%
Below 30%	00	0%

Analysis:

The table shows the response of students on the institution making effort to engage students in monitoring, reviewing and continuous quality improvement of the teaching learning process.



Interpretation:

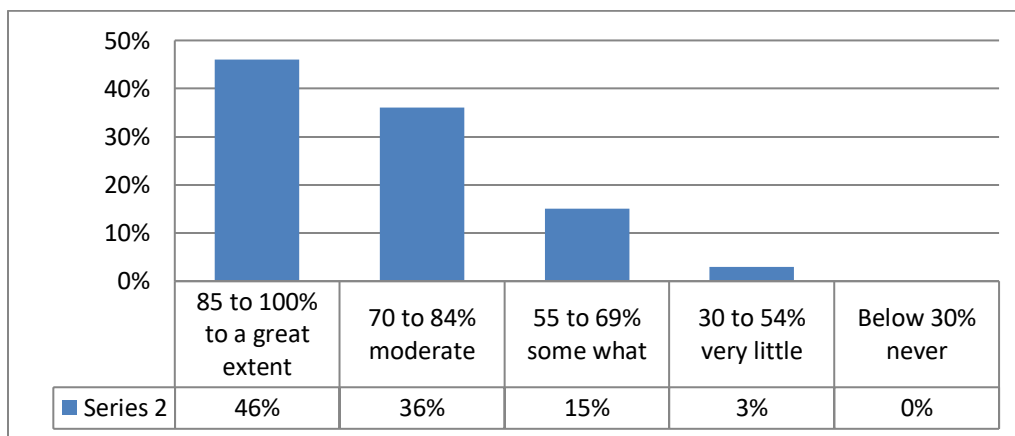
From the above table and graph, the response of students on the institution making effort to engage students in monitoring, reviewing and continuous quality improvement of the teaching learning process are mentioned, where 46% students agree with 85-100 percent completion, 36% students agree with 70-84 percent completion and the rest 18% agree to 69 percent and less.

16. The institute/ teachers use student centric methods, such as experiential learning, participative learning and problem solving methodologies for enhancing learning experiences.

Particular	No. of Responses	Response %
85 to 100%	90	46%
70 to 84%	70	36%
55 to 69%	30	15%
30 to 54%	05	3%
Below 30%	00	0%

Analysis:

The table shows the response of students on the institute/ teachers using student centric methods, such as experiential learning, participative learning and problem solving methodologies for enhancing learning experiences.



Interpretation:

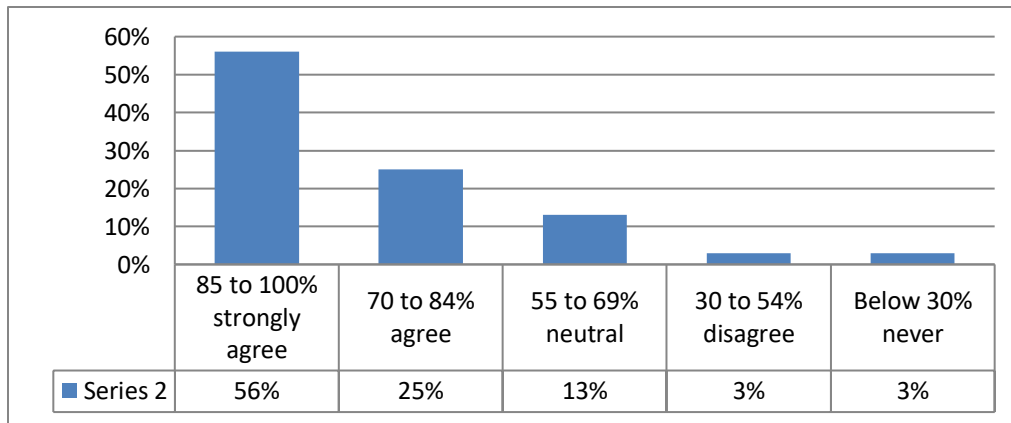
From the above table and graph, the response of students on the institute/ teachers using student centric methods, such as experiential learning, participative learning and problem solving methodologies for enhancing learning experiences are mentioned, where 46% students agree with 85-100 percent completion, 36% students agree with 70-84 percent completion and the rest 18% agree to 69 percent and less.

17. Teachers encourage you to participate in extracurricular activities

Particular	No. of Responses	Response %
85 to 100%	110	56%
70 to 84%	50	25%
55 to 69%	25	13%
30 to 54%	05	3%
Below 30%	05	3%

Analysis:

The table shows the response of students on Teachers encouraging students to participate in extracurricular activities



Interpretation:

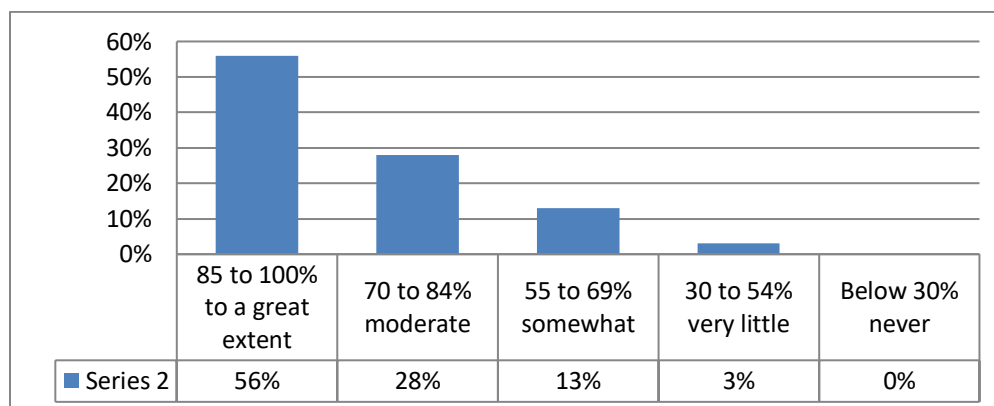
From the above table and graph, the response of students on Teachers encouraging students to participate in extracurricular activities are mentioned, where 56% students agree with 85-100 percent completion, 25% students agree with 70-84 percent completion and the rest 19% agree to 69 percent and less.

18. Efforts are made by the institute/ teachers to inculcate soft skills, life skills and employability skills to make you ready for the world of work.

Particular		No. of Responses	Response %
85 to 100%	4 – To a great extent	110	56%
70 to 84%	3 – Moderate	55	28%
55 to 69%	2 – Some what	25	13%
30 to 54%	1 – Very little	05	3%
Below 30%	0 – Not at all	00	0%

Analysis:

The table shows the response of students on Efforts made by the institute/ teachers to inculcate soft skills, life skills and employability skills to make students ready for the world of work.



Interpretation:

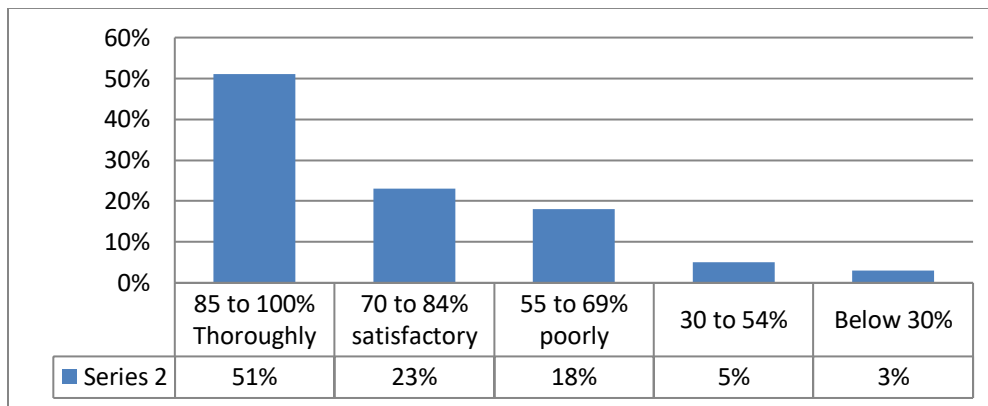
From the above table and graph, the response of students on Efforts made by the institute/ teachers to inculcate soft skills, life skills and employability skills to make students ready for the world of work are mentioned, where 56% students agree with 85-100 percent completion, 28% students agree with 70-84 percent completion and the rest 18% agree to 69 percent and less.

19. What percentage of teachers use ICT tools such as LCD projector, Multimedia, etc. while teaching.

Particular	No. of Responses	Response %
85 to 100%	100	51%
70 to 84%	50	23%
55 to 69%	40	18%
30 to 54%	10	5%
Below 30%	05	3%

Analysis:

The table shows the response of students on percentage of teachers use ICT tools such as LCD projector, Multimedia, etc. while teaching



Interpretation:

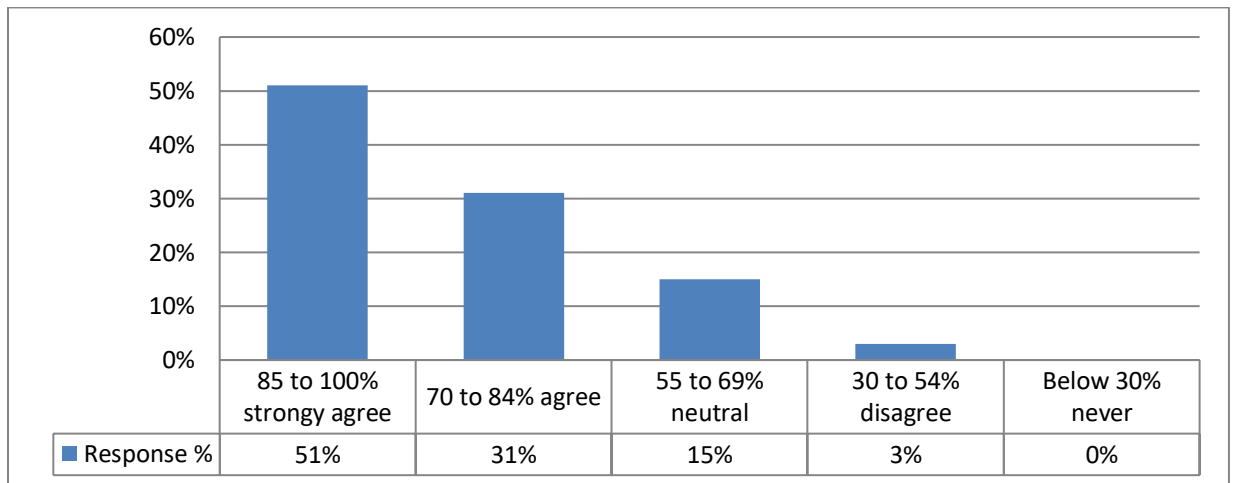
From the above table and graph, the response of students on the percentage of teachers use ICT tools such as LCD projector, Multimedia, etc. while teaching are mentioned, where 51% students agree with 85-100 percent completion, 23% students agree with 70-84 percent completion and the rest 26% agree to 69 percent and less.

20. The overall quality of teaching-learning process in your institute is very good.

Particular	No. of Responses	Response %
85 to 100%	100	51%
70 to 84%	60	31%
55 to 69%	30	15%
30 to 54%	05	3%
Below 30%	00	0%

Analysis:

The table shows the response of students on the overall quality of teaching-learning process in the institute.



Interpretation:

From the above table and graph, the response of students on the overall quality of teaching-learning process in the institute are mentioned, where 51% students agree with 85-100 percent completion, 31% students agree with 70-84 percent completion and the rest 18% agree to 69 percent and less.